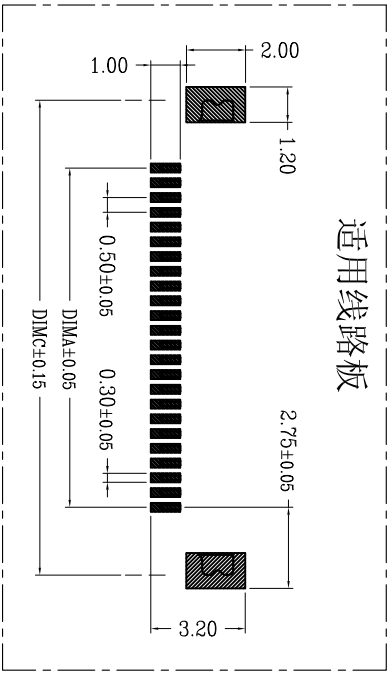
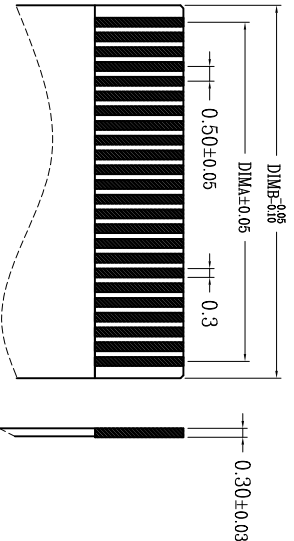
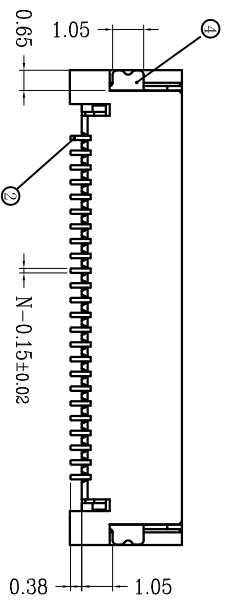
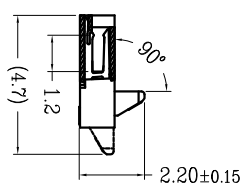
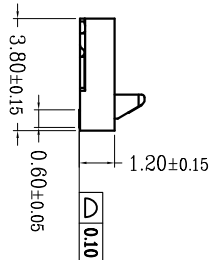
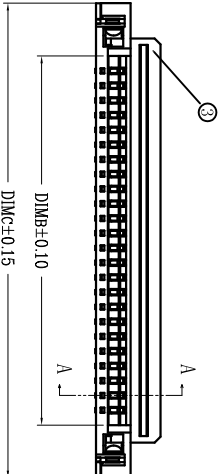
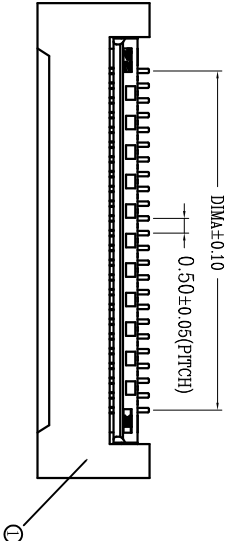
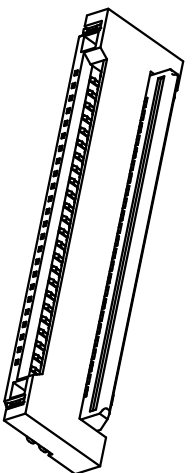


序号	品名	材质
①	0.5后压锁式波芯 (H1.2)	LCP UL94V-0 本色
②	0.5后压锁式端子 (H1.2)	磷青铜/表面镀锡
③	0.5后压锁式后盖 (H1.2)	LCP UL94V-0 黑色
④	0.5后压锁式垫片 (H1.2)	磷青铜/表面镀锡



CKT	DIMA	DIMB	DIMC	CKT	DIMA	DIMB	DIMC
4	1.50	2.52	6.10	33	16.00	17.02	20.60
5	2.00	3.02	6.60	34	16.50	17.52	21.10
6	2.50	3.52	7.10	35	17.00	18.02	21.60
7	3.00	4.02	7.60	36	17.50	18.52	22.10
8	3.50	4.52	8.10	37	18.00	19.02	22.60
9	4.00	5.02	8.60	38	18.50	19.52	23.10
10	4.50	5.52	9.10	39	19.00	20.02	23.60
11	5.00	6.02	9.60	40	19.50	20.52	24.10
12	5.50	6.52	10.10	41	20.00	21.02	24.60
13	6.00	7.02	10.60	42	20.50	21.52	25.10
14	6.50	7.52	11.10	43	21.00	22.02	25.60
15	7.00	8.02	11.60	44	21.50	22.52	26.10
16	7.50	8.52	12.10	45	22.00	23.02	26.60
17	8.00	9.02	12.60	46	22.50	23.52	27.10
18	8.50	9.52	13.10	47	23.00	24.02	27.60
19	9.00	10.02	13.60	48	23.50	24.52	28.10
20	9.50	10.52	14.10	49	24.00	25.02	28.60
21	10.00	11.02	14.60	50	24.50	25.52	29.10
22	10.50	11.52	15.10	51	25.00	26.02	29.60
23	11.00	12.02	15.60	52	25.50	26.52	30.10
24	11.50	12.52	16.10	53	26.00	27.02	30.60
25	12.00	13.02	16.60	54	26.50	27.52	31.10
26	12.50	13.52	17.10	55	27.00	28.02	31.60
27	13.00	14.02	17.60	56	27.50	28.52	32.10
28	13.50	14.52	18.10	57	28.00	29.02	32.60
29	14.00	15.02	18.60	58	28.50	29.52	33.10
30	14.50	15.52	19.10	59	29.00	30.02	33.60
31	15.00	16.02	19.60	60	29.50	30.52	34.10
32	15.50	16.52	20.10				

适用扁平线

适用线路板

- 技术指标:
1. 塑件表面应光洁、无毛边、无明显收缩、缺陷、裂纹等现象。
  2. 温度范围: -25° C~85° C.
  3. 额定电压: 50V, AC/DC(等效).
  4. 接触电阻: ≤0.03Ω.
  5. 绝缘电阻: ≥500MΩ

UNITS mm	MATL	FINISH	QTY
X± 0.3	X± 5'		
X± 0.25	X± 2'		
XXX± 0.20	XX± 1'		
XXX± 0.10	XXX± 0.5'		

PART NO.(INTENDED USE)	TITLE:
0512-GX-nPWB	

APPD:	DWG. NO.:
0512-GX-nPWB	0512-GX-nPWB

CHKD:	SCALE	SHEET	REV.
HU	1/1	1/1	A

DR:	DATE:
HU	2016.09.25

**QWYCONN** 深圳市启威源电子有限公司  
SHENZHEN QIWEIYUAN ELECTRONIC CO., LTD.